

## METAL ANALYSES: SOME CASE STUDIES FROM MOTYA

Caterina De Vito - Martina Bernabale - Sapienza University of Rome

*The aim of this investigation is to reconstruct the archeometallurgical processes, manufacturing techniques, and cycle-life of Motyan (Sicily, Italy) metallic artefacts from metals extraction to corrosion. The research was developed through five case studies, for which metallurgical and corrosion processes are reconstructed.*

Keywords: Phoenician - Punic metallurgy; weapons; slags; bronze artefacts; corrosion

## 1. INTRODUCTION

The study of metal artefacts from Motya sheds new light on the manufacturing processes and technological skills of the Phoenicians. They were renowned in ancient times as “metal producers” and/or at least “diffusers” of technological transfer and advancements of the *ars flaturae* during the first centuries of the 1<sup>st</sup> millennium BC.<sup>1</sup> For several centuries, from the 9<sup>th</sup> to the 5<sup>th</sup> century BC, much of their metal products were exchanged in the Mediterranean, together with precious goods and stuffs on cargos and ships. Although several research have been carried out on different typologies of metal artefacts from Phoenician sites in the Iberian Peninsula, Sardinia and North Africa, scientific studies on archaeometric characterization of metalworks from Motya have never been performed before.<sup>2</sup>

The main issue of this project was the assessment of the original microstructure and composition of the alloys, including microstructural features induced by manufacturing process and the evolution of the corrosion processes over time, including selective dissolution, and formation of new phases during burial conditions.

1.1. *Microstructure and chemical composition of a Sardinian bronze axe*

MCM.18.200 is a bronze two-looped socketed axe attributed to a mature stage of Motya IIIIC Period (1100-950 BC), found in a sounding in the so-called *Casa dei mosaici*, dated to the 10<sup>th</sup> century BC, buried under several strata of the Phoenician colony.<sup>3</sup>

Scanning Electron Microscope (SEM) analysis shows a Cu-Sn matrix and numerous brighter inclusions, having different shapes and sizes, formed due to the low miscibility of Pb in copper (fig. 1:a). The number and distribution of Pb-inclusions in the matrix depend on casting parameters. In particular, the big globules suggest that the cooling rate is very slow and there was time for the bulk of Pb to be refused from the solid ahead of the freezing front.<sup>4</sup>

---

<sup>1</sup> Whitaker 1921; Markoe 1985; Matthäus 1985; Giunlia-Mair 2015.

<sup>2</sup> Valério *et al.* 2010; 2012; 2015; Kaufman *et al.* 2016; Rovira - Renzi 2017; de Caro 2017; de Caro - Angelini - Es Sebar 2021.

<sup>3</sup> Nigro 2016; Nigro *et al.* 2020.

<sup>4</sup> Hughes - Northover - Staniaszek 1982.

Regarding corrosion process, the concentration of Cu and Sn in the external layer, corresponding to the patina, is highly depleted for decuprification and de-stannification processes, where these elements are dissolved and leached from metallic structures. Indeed, a large quantity of Pb, in time, migrated from core to the surface through porosity system of the alloy and reacted with water, oxygen, chloride, sulphate and carbonate ions from the environment, forming Pb- salts. X-ray Diffraction (XRD), performed on the surface of leaded bronze axe, confirmed the occurrence of cuprite ( $\text{Cu}_2\text{O}$ ), cassiterite ( $\text{SnO}_2$ ), laurionite ( $\text{PbClOH}$ ), cerussite ( $\text{PbCO}_3$ ), litharge ( $\text{PbO}$ ), anglesite ( $\text{PbSO}_4$ ) and plumbonacrite ( $\text{Pb}_5\text{O}(\text{OH})_2(\text{CO}_3)_3$ ).

Electron Microprobe Analysis (EMPA) showed that the matrix is composed by Cu 86.9-95.4wt.% and Sn 2.8-6.9 wt.% with arsenic impurities (0.6-1.3 wt.%). Instead, Pb in distinct micro-domains reached concentrations up to 95wt.%. The high concentration of Pb suggested a deliberate addition in the alloy to improve the fluidity of the molten bronze, thus increasing the temperature of the solidification range. However, these big islands completely immiscible in the Cu-Sn solid phase, representing points of weakness and possible fracture in the metal artefact, are not suitable alloy features for weapons productions that should have high mechanical properties. This apparent contradiction can be explained taking into account that this kind of weapons were usually employed in ritual and cult contexts, such as deposits and hoards<sup>5</sup> and was characterized by the presence on the surface of lead globules functional to produce the loops. This hypothesis is supported by the presence of leaded bronzes in many axes from Atlantic Europe, such as the British Isles, Western France and North-Western Iberia, whereas in the regions around the Mediterranean Sea binary bronze was employed until Early Iron Age.<sup>6</sup>

## 1.2. Corrosion pattern of Iron Age bronze arrowheads

The Iron Age bronze arrowheads at issue were long range offensive weapons involved during the siege by Dionysius, the tyrant of Syracuse (Sicily, Italy), who conquered the island of Motya in 397/6 BC.<sup>7</sup> On the basis of their typology, morphological features and geographical areas of attestation, the arrowheads are classified in different types: Type A.1 or “Crete type”, characterized by a flat and lanceolate body with two lateral barbs; Type B.1, *i.e.*, short conical points with two lateral wings; Types C.1 and Type C.2 also known as “Scythian type”, that are short pyramidal points and Type D.1, *i.e.*, conical arrowhead.<sup>8</sup>

SEM and EMP data revealed that the presence of Sn played a key role in the corrosion process of conical arrowhead (Type D.1). These arrowheads are Pb-free bronze alloy and are characterized by the occurrence of periodic corrosion layers, called Liesegang rings with streaks of Sn-oxide interposed between  $\text{Cu}_2\text{O}$  and  $\text{Cu}_2(\text{OH})_3\text{Cl}$  layers. These banded structures are involved by environmental changes in burial conditions, *e.g.*, temperature, relative humidity, duration and intensity of rain, sea salinity, soil corrosivity, interdiffusion

<sup>5</sup> Taramelli 1921, fig. 27; Bernabò Brea - Cavalier 1980, 76, pl. 284:25; Begemann *et al.* 2001, 49, fig. 5:10714; Lo Schiavo 2003, 159; 2013, fig. 8:3.

<sup>6</sup> Bernabale *et al.* 2019; Nigro *et al.* 2020.

<sup>7</sup> Nigro 2022.

<sup>8</sup> Termini 2005.

of metallic components and soil salts. On the contrary, the arrowheads with more accessory elements (*i.e.*, wings and barbs) and high quantities of lead, which occurred at microscale in form of large globules (Type B.1 and C.2) or as Pb fine dispersion in grain boundaries (Type A.1 and C.1), are characterized by multi-layers consisting of lead compounds. Indeed, in a chlorine-rich environment, the less noble metal Pb acts as an anode, involving selective corrosion of Pb in form of pitting and formation of a porous structure (fig. 1:b).

Based on X-ray Powder Diffraction (XRPD) results, the corrosion mechanism identified in all samples was bronze disease, characterized by the presence of chlorides in the alloy interface. It has been observed that a greater stratification of copper trihydroxychlorides and mixed salts of Cu and Pb, *i.e.*, pseudoboleite, is favored in alloys with smaller Pb microdomains, whereas in alloys with large Pb globules lead salts prevail, *i.e.*, penfieldite and cotunnite.

The harder type of binary alloy, having high Sn content, was used for the conical arrowheads attributed to Motyan production, suggesting that, although the Motyan have been tragically defeated, they have defended themselves with weapons of good quality. On the contrary, the pyramidal and lanceolate arrowheads, ascribed to the troops of Dionysius I of Syracuse - since the greater number of attestations of arrowheads “on arrival” – consisted of a more modern type of ternary alloy, but with worse mechanical properties due to the presence of a soft metal as Pb.<sup>9</sup>

### 1.3. Archaeometric investigation of copper and iron waste

Microstructure, mineralogy, and chemistry of fourteen copper and iron slags from the Phoenician site of Motya, dating back to 8<sup>th</sup>-4<sup>th</sup> centuries BC<sup>10</sup> were investigated. The samples were analyzed by a multi-analytical approach, based on Scanning Electron Microscope (SEM-EDS), High-Resolution Field Emission Scanning Electron Microscopy (HR-FESEM), Micro-Raman spectroscopy ( $\mu$ -RS) and Electron Microprobe Analysis (EMPA). The results showed different typologies of by-products, such as base metals speiss, copper slags from smelting sulphide ore with matte and iron smelting and smithing slags, suggesting different stages of copper and iron productions.

Group 1, corresponding to the more recent Motyan copper production (6<sup>th</sup>-4<sup>th</sup> centuries BC), is composed by high amount of copper and has numerous Cu-S inclusions. The occurrence of these wastes could be due to working processes of final refining stage of copper metallurgy in Motya.

Group 2 (7<sup>th</sup>-mid 6<sup>th</sup> centuries BC) is considered the remains of base-metal speiss, *i.e.*, a complex mixture of copper arsenides and antimonides, characterized by copper dendrites and interdendritic micro-domains, containing As, Sb, Bi, Pb.

Group 3 (7<sup>th</sup>-mid 6<sup>th</sup> centuries BC) wastes suggest the presence of metallurgic activity in Motya, producing copper from sulphide raw materials (probably chalcopyrite) by partial smelting of ores.

Group 4 (8<sup>th</sup>-4<sup>th</sup> century BC) is composed by Fe-rich slags. On the base of macroscopic features and chemical and mineralogical markers, two types of slags are distinguished:

<sup>9</sup> Bernabale *et al.* 2021.

<sup>10</sup> Nigro 2009; Spagnoli 2019.

furnace slags, corresponding to the primary process of iron production, and hammerscales, corresponding to materials removed during smithing, when the bloom was heat-treated in the hearth and hammered on the anvil to produce the iron artefact.

#### 1.4. *Corrosion models of Iron weapons from Motya and Lilybaeum*

This study contributed to the investigation of corrosion behaviors of iron artifacts in two different conditions, *i.e.*, lagoon-like and calcarenitic hypogea environments. A multi-analytical approach that includes  $\mu$ -RS, Scanning Electron Microscopy (SEM-EDS) and Field Emission Scanning Electron Microscopy (HR-FESEM) was applied. The samples consist of a set of weapons and armors found in the “Archaic Necropolis” of Motya<sup>11</sup> (8<sup>th</sup>-6<sup>th</sup> centuries BC), along the northern shore of the island, and in the Punic Necropolis of Lilybaeum<sup>12</sup> (4<sup>th</sup> century BC).

Microstructural observation with SEM and HR-FESEM show that all weapons were made of wrought iron, with complex microstructures recognized as a) sandwich-type, b) active corrosion layers and c) high temperature/reconstructive corrosion. Micro-Raman results revealed the presence of magnetite, goethite, lepidocrocite and hematite as the main corrosion products and soil minerals as quartz, calcite, barite, actinolite, microcline, zircon and Ti-oxides.

The occurrence of lepidocrocite in the outer rust layer of most of the samples from Motya indicated that the artifacts are not yet thermodynamically passivated.

The chain-mail from Lilybaeum is shaped by hot-working processes, using high-temperature forge-welding, involving the formation of hematite at the forge-welded interfaces.

The occurrence of magnetite and metal, survived in armors buried in hypogea site of Lilybaeum, suggests more stable environmental conditions than Motya.<sup>13</sup>

#### 1.5. *Integrated approach for the study of iron nail corrosion*

A preliminary investigation of the corrosion system of an iron nail (MF.03.53) from Motya was performed by traditional and advanced techniques. Micro-Raman spectroscopy allowed to confirm the presence of an active corrosion on the external patina as confirmed by the presence of red-brown clusters of lepidocrocite. SEM-EDS analyses showed the lack of metal core in the tip of the nail and the occurrence of corroded iron phases in the dense product layer (DPL) and transformed medium (TM). In order to evaluate if the studied section was representative of the entire sample, a low-resolution scan of the nail with Multiscale X - ray Microscopy (XRM) has been performed. The challenge was to extract as much useful information about the spatial distributions of phases in iron-based archeological nail from 3D visualization and image segmentation. XRM revealed the existence of an internal metal core, starting from a few millimeters above the tip of the nail and showing that the tip is completely corroded away. In contrast, the head and upper part of the shank are well preserved. Nail 3D reconstruction and segmentation allowed

---

<sup>11</sup> Tusa 1972; 1978; 2012; Ciasca 1979; 1980; 1990.

<sup>12</sup> Bisi 1970; Bechtold 1999; Giglio 2016.

<sup>13</sup> Bernabale *et al.* 2022a.

evaluating quantitatively the presence of each phase of the nail in virtual slices. However, the low-resolution scan represented a limiting factor for the identification of the corrosion sub-layers. Thus, to tackle the complete characterization of the virtual section which included the metal remaining, high-resolution scan is also performed, covering all length scales from micrometric resolution to centimeters. The evolution of internal nail corrosion has been tracked by combining SEM-EDS data with XRM images of the entire nail.<sup>14</sup>

## 2. CONCLUSIVE REMARKS

The research carried out on metal artifacts, weapons, nails, and slags from Motya, dated between the beginning of the 1<sup>st</sup> millennium and the 4<sup>th</sup> century BC provides additional information on local metallurgy and the role of Motya in the exchange network of this category of products.

Motya, therefore, participates in the Mediterranean metallurgical *koinè* between the end of the Late Bronze Age and the beginning of the Iron Age, which involves the spread of Atlantic and Iberian types of eastwards, as evidenced by the discovery of the two-looped socketed axe.

A metallurgical activity of some importance has been performed in Motya since the 8<sup>th</sup> century BC, both for copper and iron working, and both primary (smelting) and secondary (melting) production took place on the island. This data thus suggests that either minerals or ingots and semi-finished metals arrived on the island and were locally processed.

In conclusion, Motya actively participates in the metallurgical innovations that spread in the Central and Western Mediterranean during the 1<sup>st</sup> millennium BC and shares the most widespread types and forms.

## REFERENCES

- BECHTOLD, B.  
1999 *La necropoli di Lilybaeum*, Roma 1999.
- BEGEMANN, F. - SCHMITT-STRACKER, S. - PERNICKA, E. - LO SCHIAVO, F.  
2001 Chemical composition and lead isotopy of copper and bronze from Nuragic Sardinia: *European Journal of Archaeology* 4.1 (2001), pp. 43-85.
- BERNABALE, M. - COGNIGNI, F. - NIGRO, L. - ROSSI, M. - DE CARO, T. - DE VITO, C.  
2022a A comprehensive strategy for exploring corrosion in iron-based artefacts through advanced Multiscale X-ray Microscopy: *Scientific reports* 12.1 (2022), pp. 1-9.
- BERNABALE, M. - NIGRO, L. - MONTANARI, D. - DE VITO, C.  
2021 Exploring the chemical composition and corrosion patterns of arrowheads used in the Siege of Motya (397 BC) through a multi-analytical approach: *Journal of Cultural Heritage* 52 (2021), pp. 146-152.
- BERNABALE, M. - NIGRO, L. - MONTANARI, D. - NIVEAU-DE VILLEDARY, A.M. - DE VITO, C.  
2019 Microstructure and chemical composition of a Sardinian bronze axe of the Iron Age from Motya (Sicily, Italy): *Materials Characterization* 158 (2019), article 109957.

---

<sup>14</sup> Bernabale *et al.* 2022b.

- BERNABALE, M. - NIGRO, L. - VACCARO, C. - NICOLI, M. - MONTANARI, D. - BIGINI, P. - DE VITO, C.  
 2022b Micro-Raman spectroscopy and complementary techniques for the study of iron weapons from Motya and Lilybaeum (Sicily, Italy): Corrosion patterns in lagoon-like and calcarenitic hypogea environments: *Journal of Raman Spectroscopy* 53.2 (2022), pp. 272-287.
- BERNABÒ BREA, L. - CAVALIER, M.  
 1980 *Meligunis - Lipàra IV. L'Acropoli di Lipari nella Preistoria*, Palermo 1980.
- BISI, A.M.  
 1970 Scavi Nella Necropoli Dei Cappuccini: *Notizie Degli Scavi di Antichità* 24 (1970), pp. 524-559.
- CIASCA, A.  
 1979 Scavi alle mura di Mozia (campagna 1978): *Rivista di Studi Fenici* VII (1979), pp. 207-227.  
 1980 Mozia 1979. Scavi alle mura (campagna 1979): *Rivista di Studi Fenici* VIII (1980), pp. 237-252.  
 1990 Sulle necropoli di Mozia: *Sicilia Archeologica* 72 (1990), pp. 7-11.
- DE CARO, T.  
 2017 The ancient metallurgy in Sardinia (Italy) through a study of pyrometallurgical materials found in the archaeological sites of Tharros and Montevecchio (West Coast of Sardinia): *Journal of Cultural Heritage* 28 (2017), pp. 65-74.
- DE CARO, T. - ANGELINI, E. - ES SEBAR, L.  
 2021 Application of  $\mu$ -Raman spectroscopy to the study of the corrosion products of archaeological coins: *Acta Imeko* 10 (2021), pp. 234-240.
- GIGLIO, R.  
 2016 La necropoli di Lilibeo alla luce delle recenti scoperte: E. LATTANZI - R. SPADEA (a cura di), *Se cerchi la tua strada verso Itaca...Omaggio a Lina Di Stefano*, Roma 2016, pp. 101-114.
- GIUMLIA-MAIR, A.  
 2015 Phoenician Metalwork: Composition and techniques: J.F. JIMÉNEZ ÁVILA (ed.), *Phoenician Bronzes in Mediterranean* (Bibliotheca Archaeologica Hispana 45), Madrid 2015, pp. 481-516.
- HUGHES, M.J. - NORTHOVER, J.P. - STANIASZEK, B.E.P.  
 1982 Problems in the analysis of leaded bronze alloys in ancient artefacts: *Oxford Journal Archaeology* 1.3 (1982), pp. 359-364.
- KAUFMAN, B. - DOCTER, R. - FISCHER, C. - CHELBI, F. - MARAOUI TELMINI, B.  
 2016 Ferrous metallurgy from the Bir Massouda metallurgical precinct at Phoenician and Punic Carthage and the beginning of the North African Iron Age: *Journal of Archaeological Science* 71 (2016), pp. 33-50.
- LO SCHIAVO, F.  
 2003 Sardinia between East and West: interconnections in the Mediterranean: N.C. STAMPOLIDIS (ed.), *Sea routes from Sidon to Huelva. Interconnections in the Mediterranean, 16<sup>th</sup> - 6<sup>th</sup> c. BC. Proceedings of the International Symposium held at Rethymnon, Crete, September 29-october 2, 2022*, Athens 2003, pp. 152-161.  
 2013 Interconnessioni tra Mediterraneo e Atlantico nell'età del Bronzo: il punto di vista della Sardegna: M.E. AUBET - P. SUREDA (eds.), *Interacción social y comercio en la antesala del colonialismo. Actas del seminario internacional celebrado en la Universidad Pompeu Fabra (28-29 de marzo 2012)* (Cuadernos de Arqueología Mediterránea 21), Barcelona 2013, pp. 127-134.

- MARKOE, G.  
1985 *Phoenician bronze and silver bowls from Cyprus and the Mediterranean* (University of California Publications, Classical Studies 26), Berkeley - Los Angeles - London 1985.
- MATTHÄUS, H.  
1985 *Metallgefäße und Gefäßuntersätze der Bronzezeit, der geometrischen und archaischen Periode auf Cypern mit einen Anhang der bronzezeitlichen Schwertfunde auf Cypern* (Prähistorische Bronzefunde II,8), München 1985.
- NIGRO, L.  
2009 Offerte e depositi votivi nel Santuario C3 del Kothon di Mozia nel IV secolo a.C.: S. FORTUNELLI - C. MASSERIA (a cura di), *Ceramica attica da santuari della Grecia, della Ionia e dell'Italia. Atti Convegno Internazionale Perugia 14-17 marzo 2007*, Venosa 2009, pp. 703-719.  
2016 Mozia nella preistoria e le rotte levantine: i prodromi della colonizzazione fenicia tra secondo e primo millennio a.C. nei recenti scavi della Sapienza: A. CAZZELLA - A. GUIDI - F. NOMI (a cura di), *Ubi Minor.... Le isole minori del Mediterraneo centrale dal Neolitico ai primi contatti coloniali. Convegno di Studi in ricordo di Giorgio Buchner, a 100 anni dalla nascita (1914 - 2014)* (Scienze dell'Antichità 22.2), Roma 2016, pp. 339-362.  
2022 Il "Kothon" di Mozia 20 anni dopo: Sebastiano Tusa e la piscina sacra di Ba'al: S. DE MARTINO - M. MARAZZI - L. MILANO (a cura di), *Orizzonti d'Oriente. Tra Mediterraneo e Asia centrale. Studi in ricordo di Sebastiano Tusa* (Eothen 25. Collana di studi sulle civiltà dell'Oriente antico 25), Firenze 2022, pp. 135-161.
- NIGRO, L. - MONTANARI, D. - MURA, F. - BERNABALE, M. - DE VITO, C. - NIVEAU-DE-VILLEDARY, A.M.  
2020 A Sardinian early 1<sup>st</sup> millennium BC bronze axe from Motya: *Vicino Oriente XXIV* (2020), pp. 57-74.
- ROVIRA, S. - RENZI, M.  
2017 Early technologies for metal production in the Iberian Peninsula: *Materials and Manufacturing Processes* 32.7-8 (2017), pp. 756-764.
- SPAGNOLI, F.  
2019 Ritual Practices, Food Offerings, and Animal Sacrifices: Votive Deposits of the Temple of the Kothon (Motya): a quantitative and distributive analysis of finds: S. BLACKLEY - B.J. COLLINS (eds.), *Religious Convergence in the Ancient Mediterranean* (Studies in Ancient Mediterranean Religions 2), Atlanta 2019, pp. 329-358
- TARAMELLI, A.  
1921 Il ripostiglio dei bronzi nuragici di Monte Sa Idda di Decimoputzu (Cagliari): *Monumenti Antichi dei Lincei XXVII* (1921), pp. 5-106.
- TERMINI, A.  
2005 Le punte di freccia in bronzo nella Sicilia punica: *Atti del V Congresso Internazionale di Studi Fenici e Punici, Marsala - Palermo, 2-8 ottobre 2000*, Palermo 2005, pp. 653-665.
- TUSA, S.  
1972 La necropoli arcaica e adiacenze. Lo scavo del 1970: F. BEVILACQUA - A. CIASCA - G. MATTHIAE SCANDONE - S. MOSCATI - V. TUSA - A. TUSA CUTRONI (a cura di), *Mozia - VII. Rapporto preliminare della Missione congiunta con la Soprintendenza alle Antichità della Sicilia Occidentale* (Studi Semitici 40), Roma 1972, pp. 7-81.  
1978 La necropoli arcaica e adiacenze. Relazione preliminare degli scavi eseguiti a Mozia negli anni 1972, 1973, 1974: A. CIASCA - G. COACCI POLSELLI - N. CUOMO DI CAPRIO - M.G. GUZZO AMADASI - G. MATTHIAE SCANDONE - V. TUSA - A. TUSA CUTRONI - M.L. UBERTI (a cura di), *Mozia - IX. Rapporto preliminare della Missione congiunta con la Soprintendenza alle Antichità della Sicilia Occidentale* (Studi Semitici 50), Roma 1978.  
2012 Le armi dei corredi tombali della necropoli arcaica di Mozia: *Vicino Oriente XVI* (2012), pp. 131-150.

- VALÉRIO, P. - SILVA, R.J.C. - ARAÚJO, M.F. - SOARES, A.M.M. - BARROS, L.  
2012 A multianalytical approach to study the Phoenician bronze technology in the Iberian Peninsula-A view from Quinta do Almaraz: *Materila Characterization 67* (2012), pp. 74-82.
- VALÉRIO, P. - SILVA, R.J.C. - SOARES, A.M.M. - ARAÚJO, M.F. - GONÇALVES, A.P. - SOARES, R.M.  
2015 Combining X-ray based methods to study the protohistoric bronze technology in Western Iberia: *Nuclear Instruments and Methods in Physics Research Section B: Beam Interaction with Materials and Atoms* 358 (2015), pp. 117-123.
- VALÉRIO, P. - SILVA, R.J.C. - SOARES, A.M.M. - ARAÚJO, M.F. - BRAZ FERNANDES, F.M. - SILVA, A.C. - BERROCAL-RANGEL, L.  
2010 Technological continuity in Early Iron Age bronze metallurgy at the South-Western Iberian Peninsula - a sight from Castro dos Ratinhos: *Journal Archaeological Science* 37 (2010), pp. 1811-1819.
- WHITAKER, J.I.S.  
1921 *Motya, a Phoenician colony in Sicily*, London 1921.



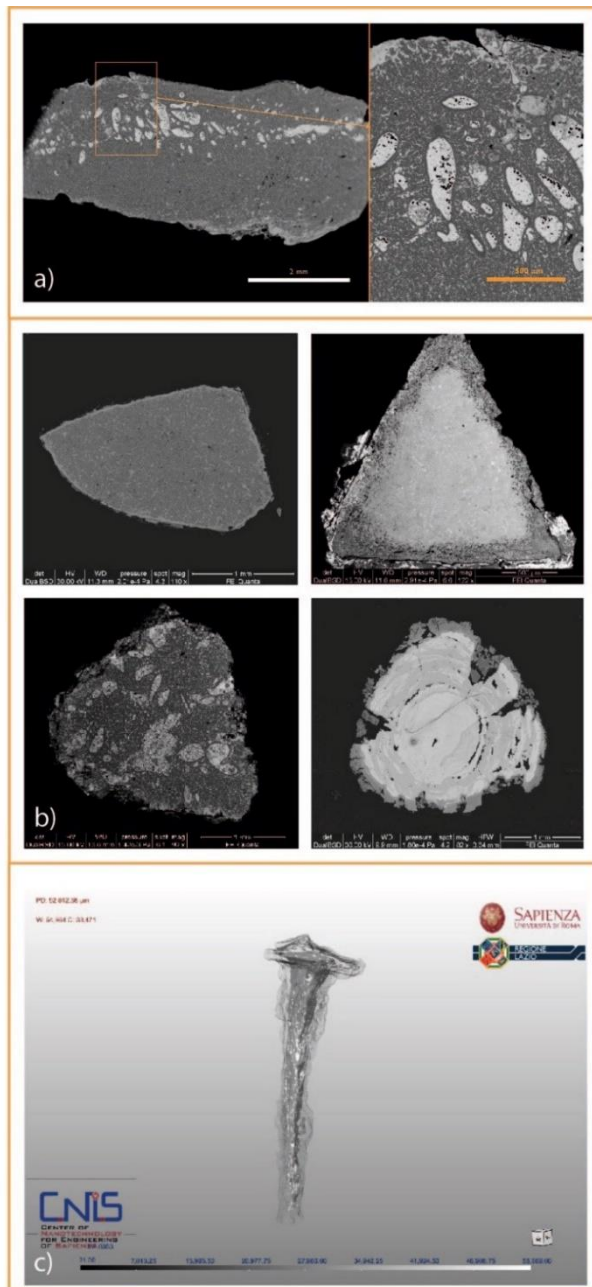


Fig. 1 - BSE images of axe MCM.18.200 (a), arrowheads MM.78.151/8, MM.16.162, MM.16.13, MM.79,61 (b) and 3D tomographic image of nail MF.03.53 (c).